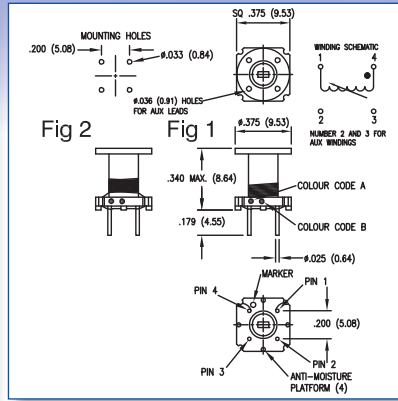
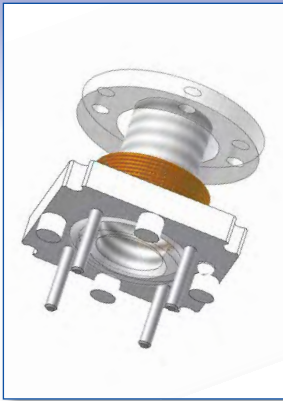


VARIABLE COILS

Dimensions in inches (mm)



Core Material

- 01 to -13 Carbonyl J (Green)
- 14 to -49 Carbonyl E (Red)
- 50 to -73 Carbonyl C (Yellow)

How to order code

556 - 7105 - XX - 00 - 00

Basic Part No.

Inductance Code

Fig.	Basic Part No.	Inductance (μ H)		Colour Code		"Q" at L Min.	"Q" at L Max.	Test Frequency (MHz)	DCR Max. (Ω)	DC Max. (mA)	SRF Min. (MHz)	
		Min.	Max.	A	B							
1	556-7105	-01	0.090	0.110	Brown	-	60	70	25.0	0.030	487	550
		-02	0.108	0.132	Red	-	60	70	25.0	0.047	300	475
		-03	0.132	0.165	Orange	-	60	70	25.0	0.040	400	430
		-04	0.162	0.198	Yellow	-	65	75	25.0	0.044	400	350
		-05	0.198	0.242	Green	-	65	75	25.0	0.055	400	330
		-06	0.242	0.297	Blue	-	65	75	25.0	0.057	400	330
		-07	0.297	0.363	Violet	-	60	70	25.0	0.143	200	310
		-08	0.352	0.431	Grey	-	60	70	25.0	0.132	200	250
		-09	0.422	0.516	White	-	60	70	25.0	0.198	200	230
		-10	0.502	0.620	Brown	Black	65	70	25.0	0.176	126	220
		-11	0.612	0.748	Brown	Brown	65	65	25.0	0.198	126	200
		-12	0.738	0.904	Brown	Red	65	70	25.0	0.220	126	180
		-13	0.900	1.10	Brown	Orange	65	70	25.0	0.242	126	170
		-14	1.08	1.32	Brown	Yellow	50	50	7.9	0.270	126	150
		-15	1.32	1.65	Brown	Green	50	50	7.9	0.400	100	140
		-16	1.62	1.98	Brown	Blue	50	50	7.9	0.520	81	130
		-17	1.98	2.42	Brown	Violet	50	50	7.9	0.560	81	110
		-18	2.43	2.97	Brown	Grey	50	50	7.9	0.650	81	100
		-19	2.97	3.63	Brown	White	50	55	7.9	0.800	64	90.0
		-20	3.52	4.31	Red	Black	55	55	7.9	1.00	64	80.0
		-21	4.22	5.16	Red	Brown	55	55	7.9	1.36	49	85.0
		-22	5.02	6.20	Red	Red	55	55	7.9	1.70	49	70.0
		-23	6.12	7.48	Red	Orange	55	55	7.9	2.00	38	65.0
		-24	7.38	9.04	Red	Yellow	55	55	7.9	2.40	38	55.0
		-25	9.00	11.0	Red	Green	55	55	7.9	3.00	31	50.0
2	556-7105	-26	10.5	11.5	Red	Blue	55	55	2.5	1.75	48	16.0
		-27	11.4	12.6	Red	Violet	55	60	2.5	1.77	48	15.0
		-28	12.3	13.9	Red	Grey	55	60	2.5	1.79	48	15.0
		-29	13.9	15.8	Red	White	55	60	2.5	1.82	48	14.0
		-30	15.2	17.1	Orange	Black	55	60	2.5	1.92	48	13.0
		-31	17.1	18.9	Orange	Brown	55	60	2.5	2.02	48	12.0
		-32	18.9	21.0	Orange	Red	55	60	2.5	2.10	48	12.0
		-33	20.9	23.1	Orange	Orange	55	60	2.5	2.20	48	11.0
		-34	22.8	25.7	Orange	Yellow	55	60	2.5	2.40	48	11.0
		-35	25.7	28.3	Orange	Green	55	60	2.5	2.60	48	11.0
		-36	28.3	31.5	Orange	Blue	55	60	2.5	2.70	48	11.0
		-37	31.4	34.5	Orange	Violet	55	60	2.5	2.80	48	11.0

Temperature Range:

-55°C to +105°C

For RoHS Compliant add suffix -LF to the part number
 Windings are varnish impregnated and powdered iron
 cores are moisture proofed
 Recommended tuning tool 435-1522-01-00-00